



Florida-Alabama TPO | June 2018

# **2040 LONG RANGE TRANSPORTATION PLAN AMENDMENTS**

# LONG RANGE TRANSPORTATION PLAN

The 2040 LRTP was  
previously amended:

April 12, 2017 – SR 180  
(Canal Road) from SR 59 to  
Foley Beach Express and  
Gregory Street/Bayfront  
Parkway/17th Avenue  
Intersection

December 13, 2017 – West  
Cervantes Street from  
Green Street to A Street



# BACKGROUND

---

**February 14, 2018** – TPO authorized staff to proceed with the LRTP amendment process for four projects: Gulf Coast Intracoastal Waterway Bridge from SR 180 (Canal Road) to Foley Beach Express; Wolf Bay Bridge and Connecting Roads from SR 180 (Canal Road) to CR 20; I-10 from US 29 to the Alabama State Line; Nine Mile Road from in the Vicinity of Beulah Road to East of I-10

---

**April 11, 2018** – TPO tabled action on: Gulf Coast Intracoastal Waterway Bridge from SR 180 (Canal Road) to Foley Beach Express; Wolf Bay Bridge and Connecting Roads from SR 180 (Canal Road) to CR 20. TPO amended the LRTP to add two projects: I-10 from US 29 to the Alabama State Line; Nine Mile Road from in the Vicinity of Beulah Road to East of I-10

# TODAY

The two previously mentioned projects are placed back on the TPO agenda for consideration. Staff is seeking a motion to amend the Florida-Alabama 2040 Long Range Transportation Plan for Two Projects:

1. Gulf Coast Intracoastal Waterway Bridge from SR 180 (Canal Road) to Foley Beach Express
2. Wolf Bay Bridge and Connecting Roads from SR 180 (Canal Road) to CR 20



# AMENDMENT 1

---

New 2-lane Bridge Improvement

---

Request is to add the project to the 2040 Needs and Cost Feasible Plans

---

Project will not remove any existing projects from the currently adopted 2040 Needs and Cost Feasible Plans

# AMENDMENT 1

Gulf Coast Intracoastal Water Bridge from SR 180 (Canal Road) to Foley Beach Express

PD&E Complete

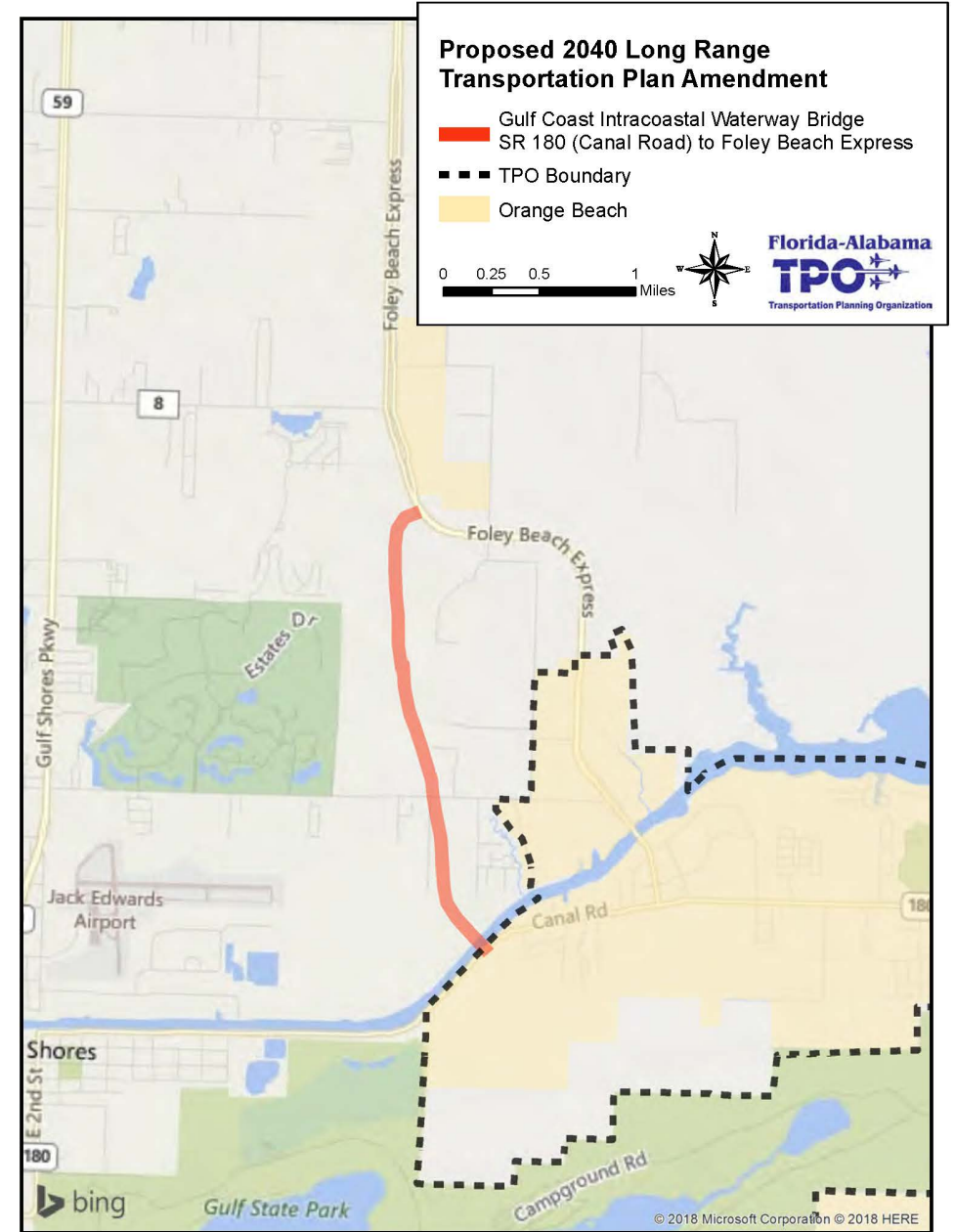
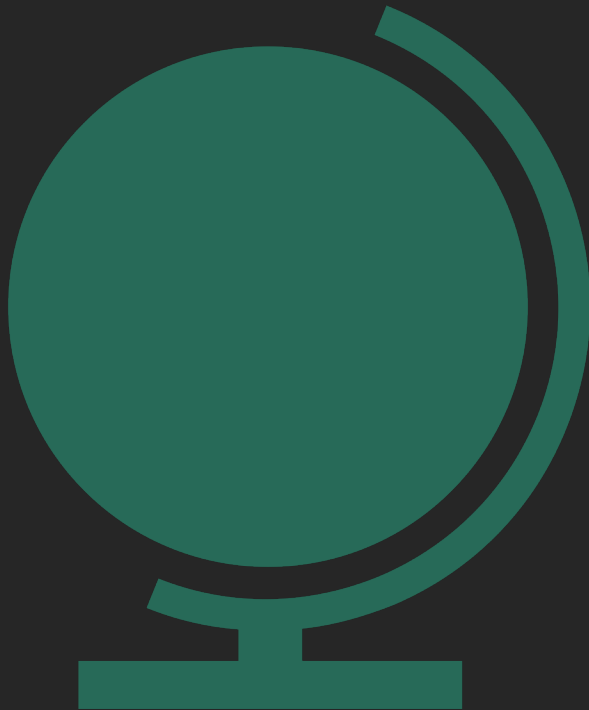
```
graph TD; A[PD&E Complete] --> B[Design Underway]; B --> C[Right-of-Way $7,483,000]; C --> D[Construction $45,000,000];
```

Design Underway

Right-of-Way \$7,483,000

Construction \$45,000,000

# AMENDMENT 1



# AMENDMENT 2

---

2-lane improvement for Bridge and Connector Roads

---

Request is to expand limits in the 2040 Needs Plan to CR 20 with updated costs and add the project to the 2040 Cost Feasible Plan

---

Project will not remove any existing projects in the currently adopted 2040 Cost Feasible Plan



# AMENDMENT 2

Wolf Bay Bridge and Connecting Roads from SR 180 (Canal Road) to CR 20

PD&E Underway

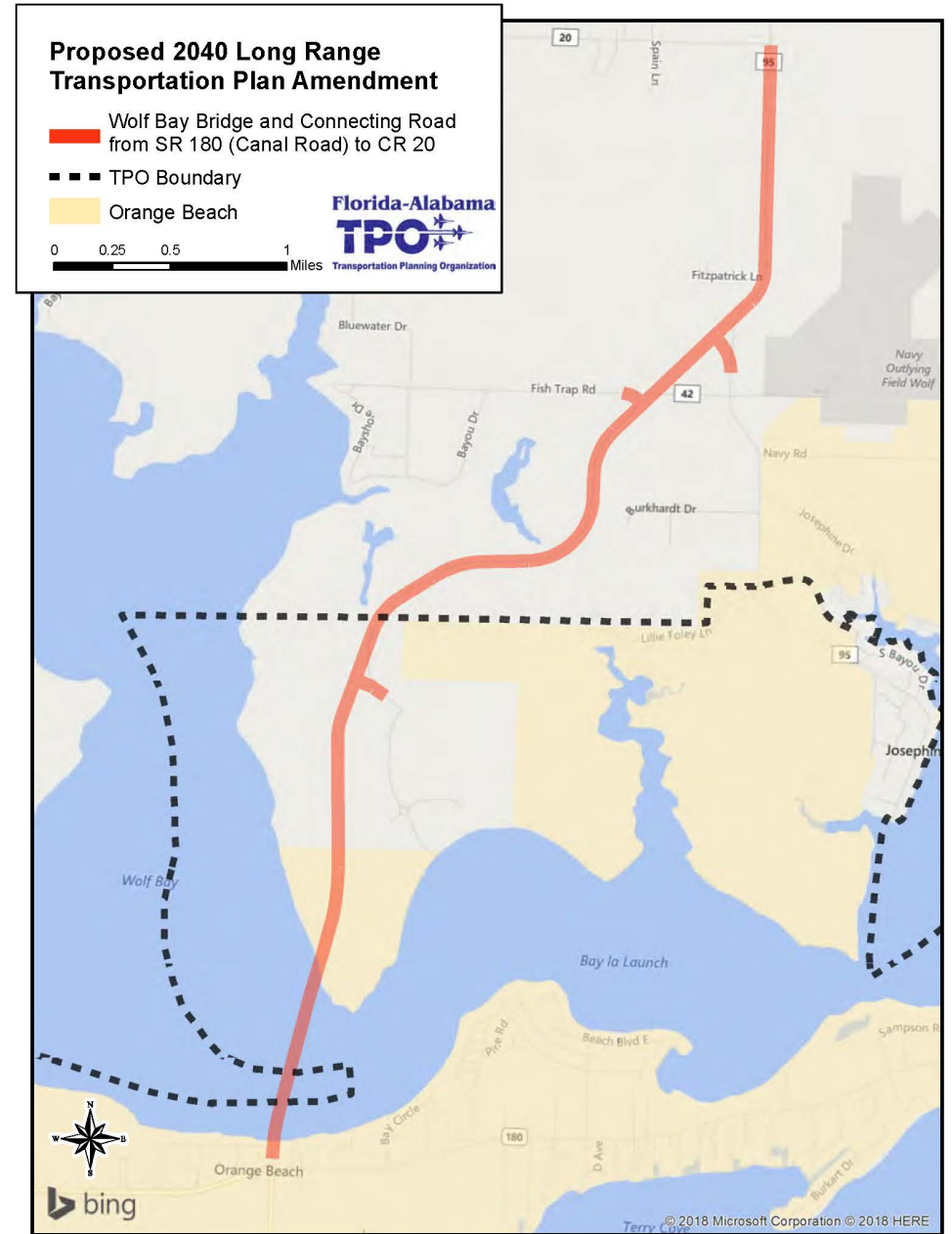
```
graph TD; A[PD&E Underway] --> B[Design $3,600,000]; B --> C[Right-of-Way $1,000,000]; C --> D[Construction $64,800,000];
```

Design \$3,600,000

Right-of-Way \$1,000,000

Construction \$64,800,000

# AMENDMENT 2



# PUBLIC INPUT

**March 5, 2018**

Public Workshop at Orange Beach Community Center

**April 2018**

Public Comment was heard at the April TPO Meeting

**March 6, 2018**

Public Workshop at University of West Florida Conference Center

**June 2018**

Public Hearing at the TPO Meeting

# RECOMMENDATION

Approval of a motion to authorize the TPO Chairman to sign Resolution FL-AL 18-12 to Amend the Florida-Alabama 2040 Long Range Transportation Plan for Two Projects:

1. Gulf Coast Intracoastal Waterway Bridge from SR 180 (Canal Road) to Foley Beach Express
2. Wolf Bay Bridge and Connecting Roads from SR 180 (Canal Road) to CR 20



# FOR MORE INFORMATION PLEASE CONTACT:

**Gary Kramer**

**Long Range Transportation Planner**  
[gary.kramer@wfrpc.org](mailto:gary.kramer@wfrpc.org)

**Public Involvement Team**

[PublicInvolvement@wfrpc.org](mailto:PublicInvolvement@wfrpc.org)

